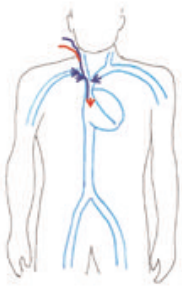


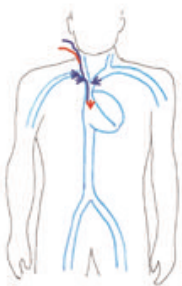
BREATHING PUMP FAILURE
or hypercapnic lung failure (e.g. exacerbated COPD, Weaning failure)
or lung protection

• **NovaPort[®] twin, 18F / 17cm, jugular**



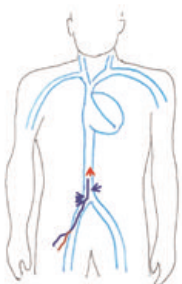
- Mobility ☺☺☺☺
- CO₂ removal ☺☺☺☺
- Oxygenation ☺

• **NovaPort[®] twin, 22F / 17cm, jugular**



- Mobility ☺☺☺☺
- CO₂ removal ☺☺☺☺
- Oxygenation ☺☺

• **NovaPort[®] twin, 24F / 27cm, femoral**

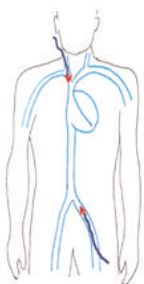


- Mobility ☺☺☺
- CO₂ removal ☺☺☺☺
- Oxygenation ☺☺☺



PULMONARY FAILURE or hypoxic lung failure (ARDS) or lung protection

• NovaPort[®] one, femoro-jugular



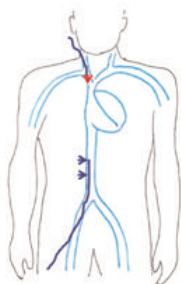
- Drainage
- Reperfusion
- Mobility
- CO₂ removal
- Oxygenation

NovaPort[®] one, 19F / 21F, 14cm

NovaPort[®] one, 17F / 19F, 14cm



• Venous drainage cannula + NovaPort[®] one, femoro-jugular



- Drainage
- Reperfusion
- Mobility
- CO₂ removal
- Oxygenation

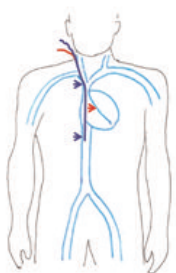
Venous cannula, approx. 30cm

NovaPort[®] one, 14cm



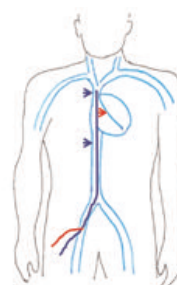
SEVERE HYPOXIC LUNG FAILURE (ARDS)

• Bicavale double lumen cannula, jugular or femoral

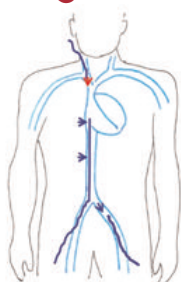


- Mobility
- CO₂ removal
- Oxygenation

-



• Long venous drainage cannula + NovaPort[®] one, femoro-femoro-jugular



- Drainage
- Reperfusion
- Mobility
- CO₂ removal
- Oxygenation

Long venous cannula, approx. 60cm

NovaPort[®] one, 14cm

-

